

RIVERWOOD

APARTMENTS



RIVERWOOD . . . a unique property on the Napa River

Situated in a quiet, park-like setting, apartment homes at Riverwood are spacious and private. All have patios or balconies and convenient covered parking. Many are single story units with a fenced patio.

We know that when you visit Riverwood, you'll agree with our friendly, professional staff that we offer the best value in the most attractive private neighborhood. Come and share the experience!

2942 Soscol Avenue
Napa, CA 94558
phone: (707) 252-1855
fax: (707) 252-9561
web: riverwoodapartments.net
email: office@riverwoodapartments.net

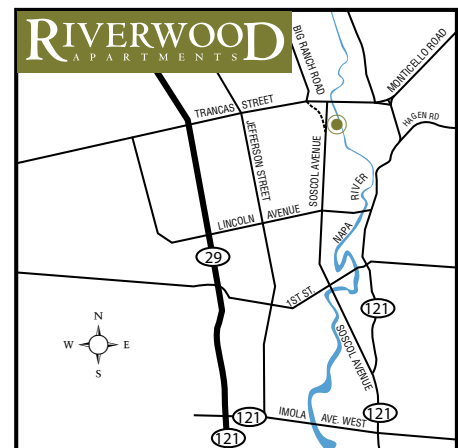


Professionally
managed by:



- Cottage-style apartment homes
- One block to convenient shopping
- Private yard or balcony
- Air conditioning
- Pool and spa
- Fitness center
- Cable TV hookups
- Friendly and attentive management

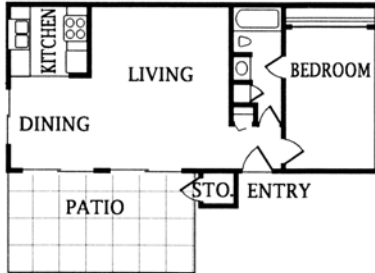
ONE AND TWO BEDROOM APARTMENTS
AVAILABLE NOW!



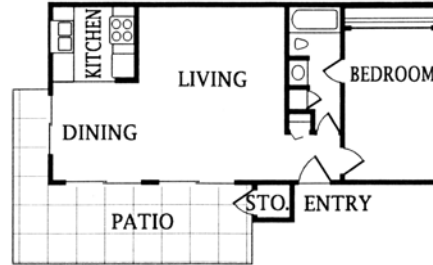
(707) 252-1855
Call now for information

or visit us on the web at
riverwoodapartments.net

Riverwood Floorplans

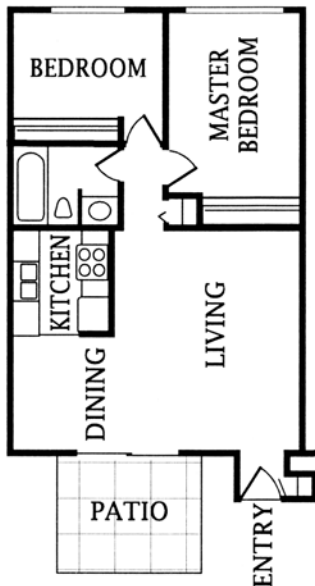


Junior One Bedroom
648 sq ft

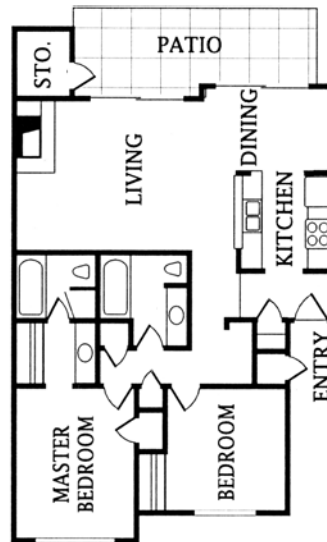


One Bedroom
720 sq ft

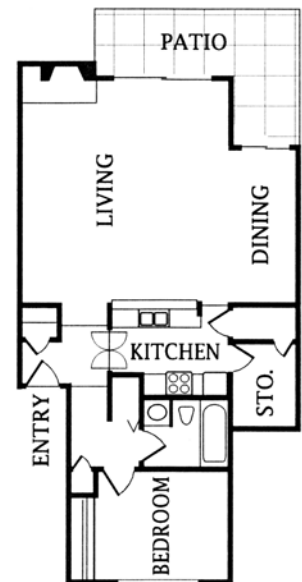
Office Hours:
Monday — Friday
9 am to 5 pm
(707) 252-1855



Two Bedroom
900 sq ft



Deluxe Two Bedroom
1149 sq ft



Deluxe One Bedroom
777 sq ft

Directions to Riverwood

From San Francisco: Take I-101 north. Take the Highway 37/Napa/Vallejo exit. Continue on 37 to the Highway 121 traffic light. Turn left and follow 121 to Highway 29 in Napa. Turn left on Highway 29. Take the Trancas Street exit and turn right on Trancas. Turn right on Soscol Avenue. Riverwood is on the left

From the East Bay: Take I-80 north towards Vallejo. Take the Highway 37/Columbus/Marine World Parkway exit west. Follow this to the Highway 29/Napa/Downtown Vallejo exit, turn right at the bottom of the exit. Continue north on 29 to the Downtown Napa/Lake Berryessa exit. Bear right. Continue into Napa, where street name becomes Soscol Avenue. Continue

past downtown Napa. Riverwood is on the right.

From the Vacaville: Take I-80 west towards Vallejo. Take the Highway 12/Jameson Canyon exit. Follow this to Highway 29 and bear right on to 29 north. Continue north to the Downtown Napa/Lake Berryessa exit. Bear right. Continue into Napa, where street name becomes Soscol Avenue. Continue past downtown Napa. Riverwood is on the right.

From Santa Rosa: Take I-101 south. Take the Highway 116E/Lakeville exit. Follow 116 east to the Hwy 12/121 junction. Turn left and continue to Highway 29 in Napa. Turn left. Take the Trancas Street exit and turn right on to Trancas. Turn right on Soscol Avenue. Riverwood is on the left.